

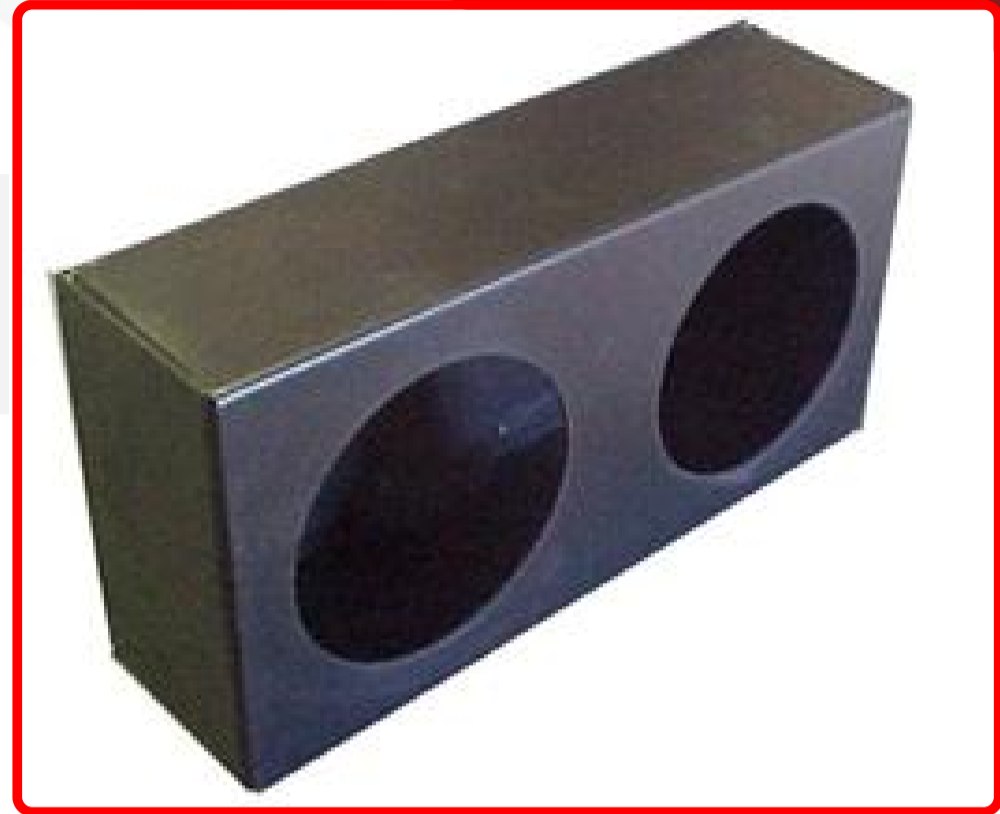


SKU # RS-503-2

Part # 1003908

Description

4in Double Round Powder Coated Steel Light Box w/ Knockouts



Categories

Truck, Agricultural, LED Truck and Trailer Lighting, LED Truck and Trailer Lighting

Sub-Categories

LED Light Boxes Professional Grade Made in USA, LED Truck & Trailer Light Boxes, Truck Light Boxes, Light Bar Full Kits

UPC 814843022798

Unit of Measure EA

Related Skus:

Cross Sell Skus:

Condition

New

Manufacturer

Race Sport Lighting

EZ Category

LED Truck & Trailer Lighting

Harmonization Code

8512.20.2080

Universal

YES

Life Expectancy

SEMA Product

Auxiliary Light Mounting Bracket

Part Type ID 16519

Reverse Polarity

Auxiliary Light Mounting Bracket

Operating Voltage

Current Draw

Wattage

Chip Type

IP Rating

LUX

Kelvin (ColorTemperature)

N/A

Universal or Vehicle Specific

Universal

Made In

USA

Warranty

1 year

Lumens

Beam Pattern

Product Information

• Heavy duty powder coated stainless steel • Individually wrapped for finish protection • Use to mount Two standard size 4" round body lights • Mounting Cabinet has drain holes for water • Made from durable powder coated stainless steel • 1 Year Warranty

Est. Labor

Hours

Gross Weight

3.40

Width

6.25

Net Weight

3.40

Height

3.50

DIM Weight

1.93

Depth

12.25

Prop 65 WARNING: This product can expose you to chemicals, which are known to the State of California to cause cancer and birth defects or other reproductive harm. For more information go to www.P65Warnings.ca.gov